

TABLE OF CONTENTS

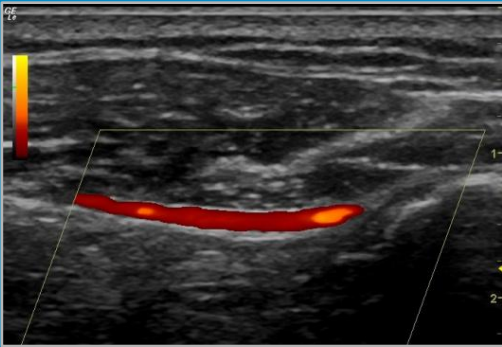
Protocols & Needle Guidance

Shoulder	3
Elbow	18
Wrist & Hand	28
Hip & Spine	36
Knee	47
Ankle & Foot	65

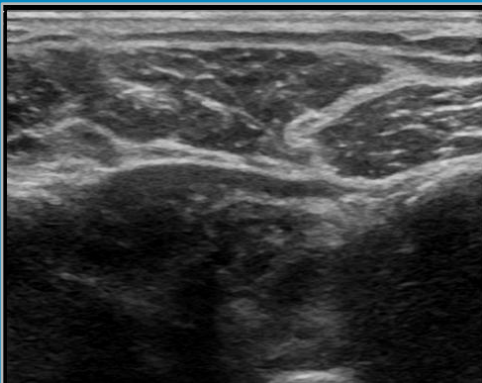
Ultrasound Physics

Penetration & Resolution	82
Four Corners	87
Through Transmission Enhancement	89
Anisotropy	91
Volume Averaging	96
Needling Techniques	98

Coricoacromial Artery and Ligament



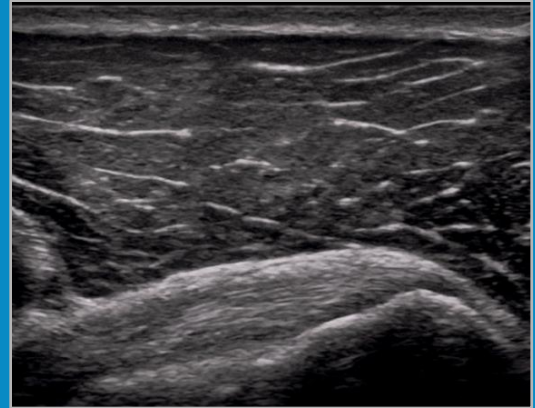
Coricoacromial Ligament Anterior/ Superior Mounding



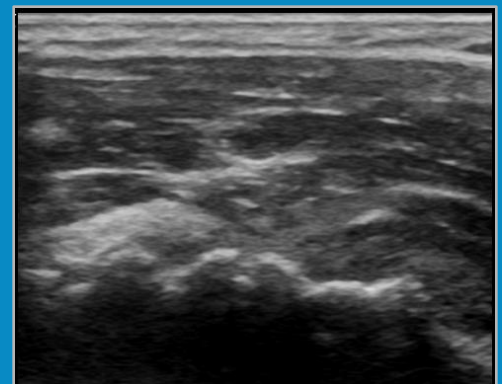
4 - B2 Subscapularis Long

SALS from level of coracoid to the most caudal lesser tuberosity tendon insertion

F: Subdeltoid bursitis, partial and full thickness tears, tendon calcifications, cortical irregularities



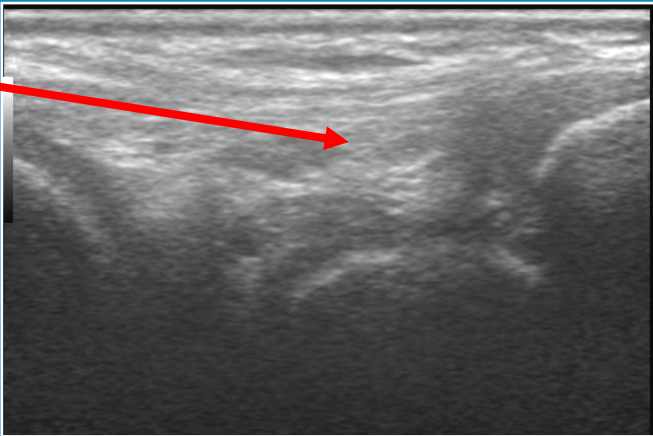
Subscapularis Tendon with Subdeltoid Bursitis and Post-op



Peroneal Peri-Neural Needle Guidance



Long "In-Plane" Axis
Approach Distal to Probe



Peroneal Nerve Long
Image Posterior to Fibular
Head

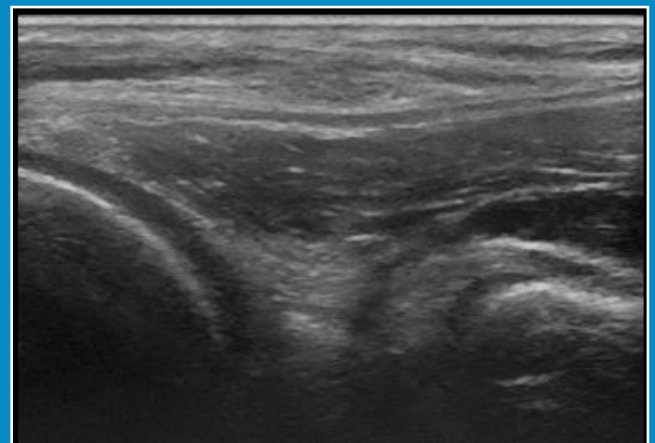
14-F1 Posterior Lateral Long

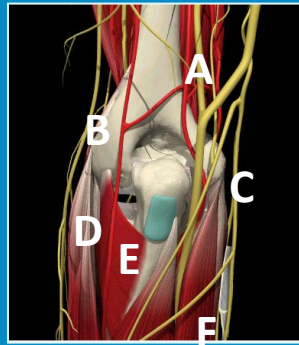
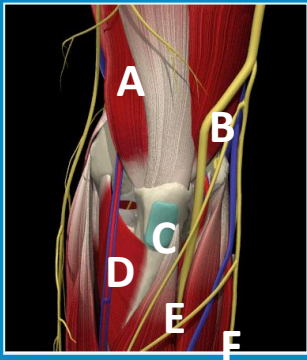
LALS to locate the joint line then SALS lateral to locate the biceps Femoris tendon insertion on to the fibula

F: Posterior lateral meniscal defects, biceps Femoris tendon defects and ganglion



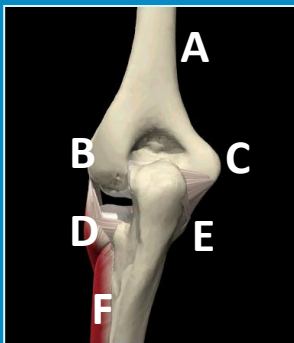
Posterior Lateral Long





- A:** Lateral Head of Triceps
- B:** Ulnar Nerve
- C:** Subcutaneous Olecranon Bursa
- D:** Anconeus Muscle
- E:** Flexor Digitorum Profundus
- F:** Palmaris Longus

- A:** Superior Ulnar Collateral Artery
- B:** Posterior Cutaneous Nerve
- C:** Medial Cutaneous Nerve
- D:** Common Extensor Digitorum
- E:** Interosseous Recurrent Artery
- F:** Flexor Carpi Ulnaris



- A:** Shaft of Humerus
- B:** Lateral Epicondyle
- C:** Medial Epicondyle
- D:** Ulnar Collateral Lig.
- E:** Annular Ligament
- F:** Supinator Muscle

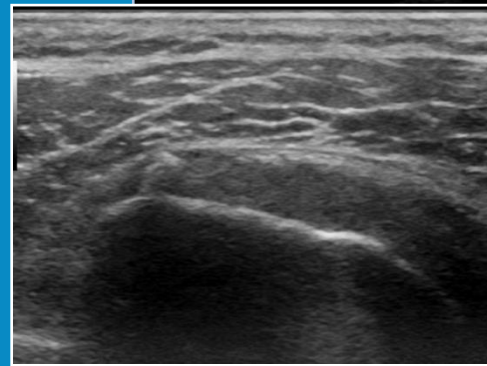
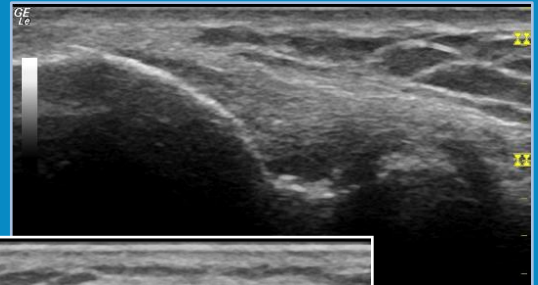


Protocol for a Dynamic Examination of the Elbow

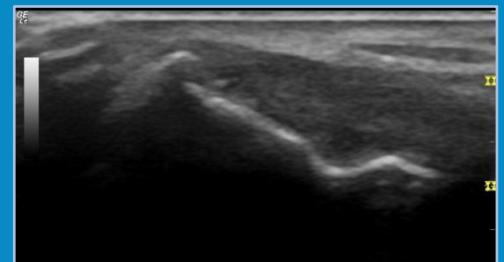
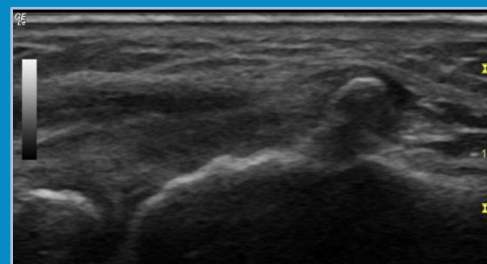
1 Lateral Epicondyle Long

LALS from joint line cephalad to lateral epicondyle

F: Cortical irregularities (**Spur**), extensor tendon defects



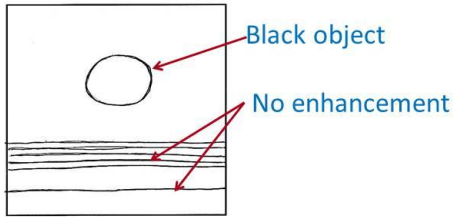
Lateral Epicondyle Long Spurs



Anisotropy & Tenosynovitis

What is the black round thing?

The image below appears as it would in real-time, except the circle would be **solid black**.



- 1. Fluid
- 2. Solid
- 3. Other ?

25

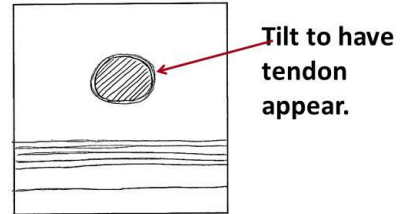
TENDON TRANSVERSE

3) Other: Anisotropy of a tendon

No through transmission enhancement

No edge artifact

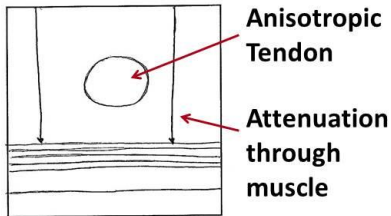
No Shadowing



26

Anisotropy of a tendon

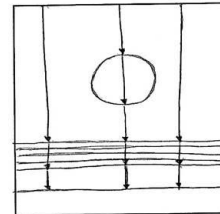
Attenuation of ultrasound signal through muscle.



27

Anisotropy of a tendon

Attenuation of ultrasound signal through muscle and tendon to bone structure.

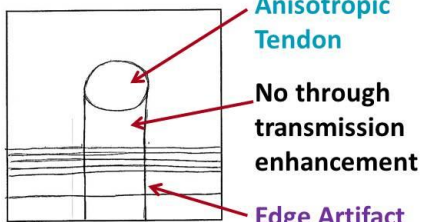


28

A) What is the Black round thing?

B) What artifacts are present?

- A)**
- 1. Fluid Filled
 - 2. Solid
 - 3. Anisotropy

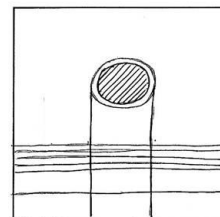


- B)**
- 1. Anisotropy
 - 2. Through Transmission enhancement
 - 3. Edge artifact

29

TENOSYNOVITIS

Minimal Fluid Surrounding (haloing) an anisotropic tendon: Tenosynovitis



Fluid surrounding the tendon enough to form an edge artifact but not through transmission enhancement of the tendon or bone surface.

30